



your seminar close to the mountains



amazing setting

unique architecture

alpine gourmet cuisine

qualified team

eco-friendly concept

outdoor activities

1 meeting room

1 private dining room

1 restaurant & lounge

1 lobby & bar

4 panoramic terraces

19 rooms and suites

1 wellness area



spaces for your meetings

we have a variety of spaces with natural daylight and breathtaking mountain views to bring you together, and technical equipment for high-quality meetings: **projector, samsung interactive screen, flipcharts, pin boards and high-speed wifi.**



meeting room | 50 m²



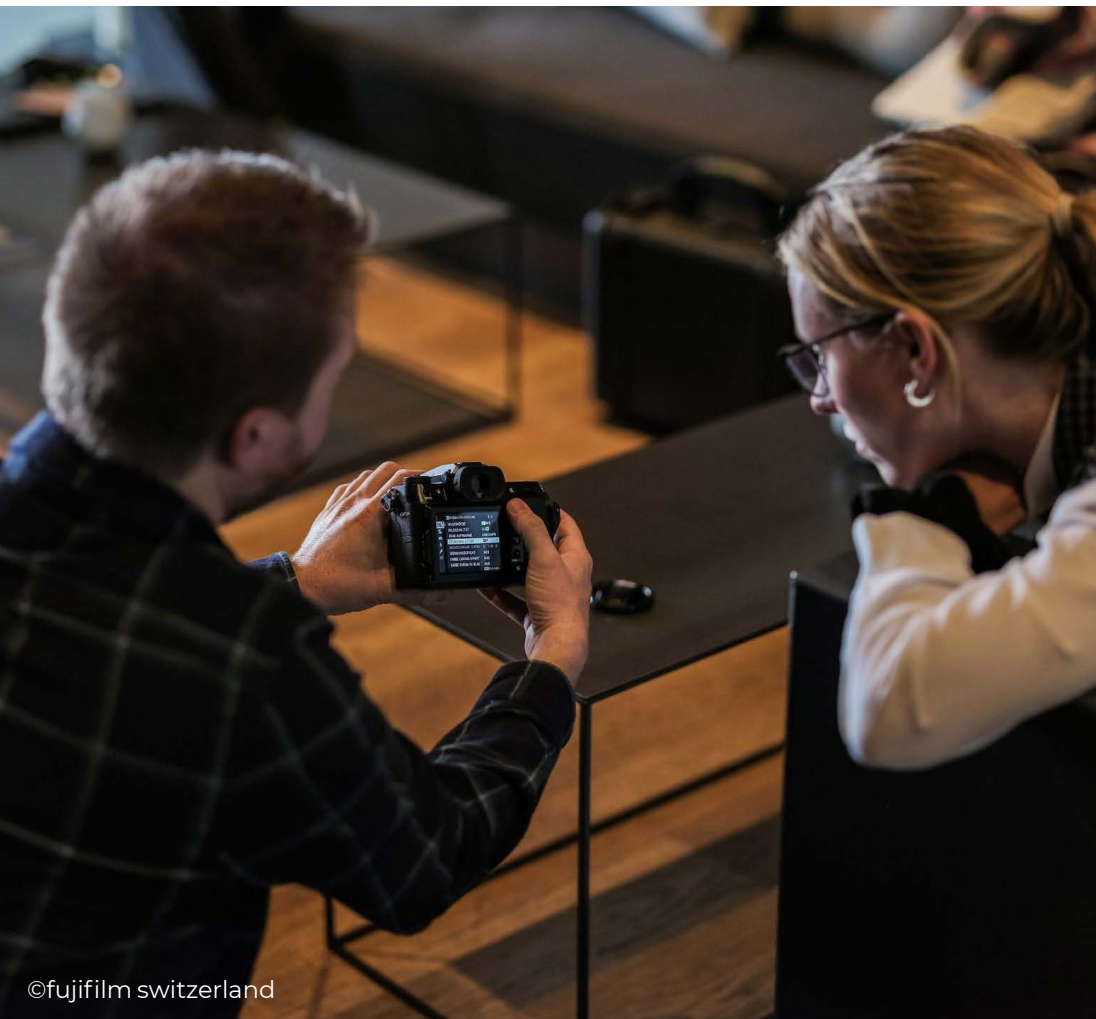
dining room | 145 m²



spaces for your workshops

we offer a variety of indoor and outdoor spaces for smaller work groups.

these areas are ideal for teamwork, developing ideas and concentrating, and all have natural daylight.



©fujifilm switzerland



lobby & bar | 248 m²



spaces for your meals

enjoy breathtaking views of the highest peaks during your welcome coffees, aperitifs and meals.

our lounge areas, dining rooms and terraces offer a rejuvenating setting, ideal for recharging your batteries.



main terrace | 180 m²





19 rooms and junior suites

please note that we have a minimum duration of stay. our rates are valid from monday to thursday, excluding holidays.
included in the rate: room, breakfast and transfers with our vehicles according to our timetable.

maximum capacity with rooms: 35 people in
double occupancy | 19 in single occupancy

	accommodation per person					meeting room	
	1 night	2 nights	3 nights	4 nights	5 nights	half day	full day
low season (apr, may, oct, nov)	430	730	1 030	1 300	1 500	300	500
mid-season (june, july, sep, dec)	480	800	1 155	1 440	1 680		
high season (jan, feb, march, aug)	550	940	1 320	1 650	1 950		

non-commissionable rates

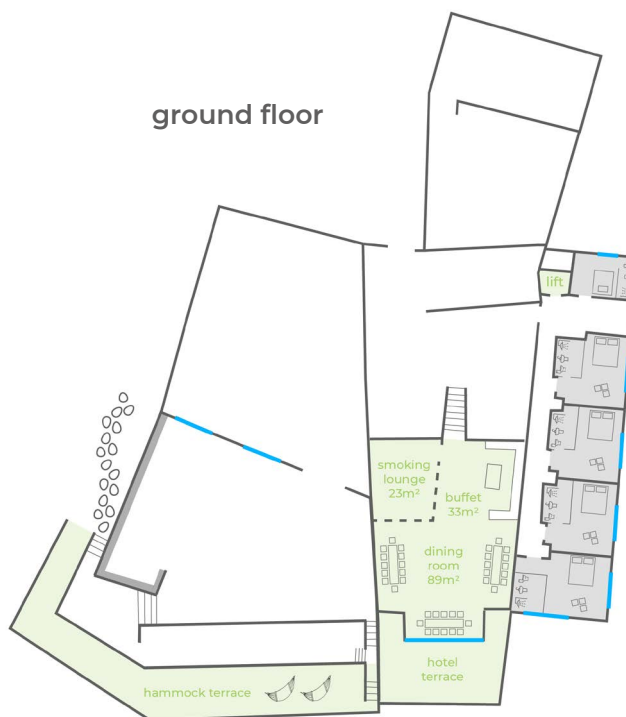
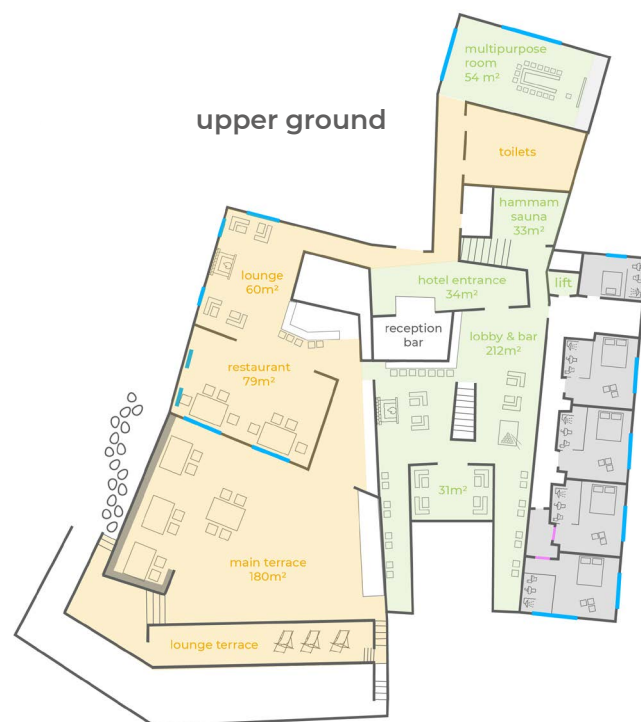




pricing of our spaces (from 2 nights)

	includes	from	to	rate
rooms	13 rooms and 3 junior suites (3 optional small rooms)	15.00 the day of arrival	11.00 the day of departure	cf. previous page
hotel	lobby & bar, dining room, pool terrace, smoking room, multi-purpose room, wellness area, hotel terrace, hammock terrace	17.00 the day of arrival	11.00 the day of departure	included if 16 rooms are rented
public	restaurant & lounge, main terrace, lounge terrace	17.00 the day of the event	9.00 the day after the event	1 500
		9.00 the day of the event	9.00 the day after the event	4 000

non-commissionable rates



food & beverage



we offer alpine flavoured menus to delight your taste buds.

entirely home made, our dishes are made with local, seasonal products.



meal		price per person
breakfast	resident clients	included
	non-resident clients	36
coffee break	quick & work	12
business lunch	2-course menu	approx. 45
	3-course menu	approx. 55
aperitif	amuses bouche	approx. 20
3-course dinner	predefined menu	approx. 85
	à la carte	approx. 85

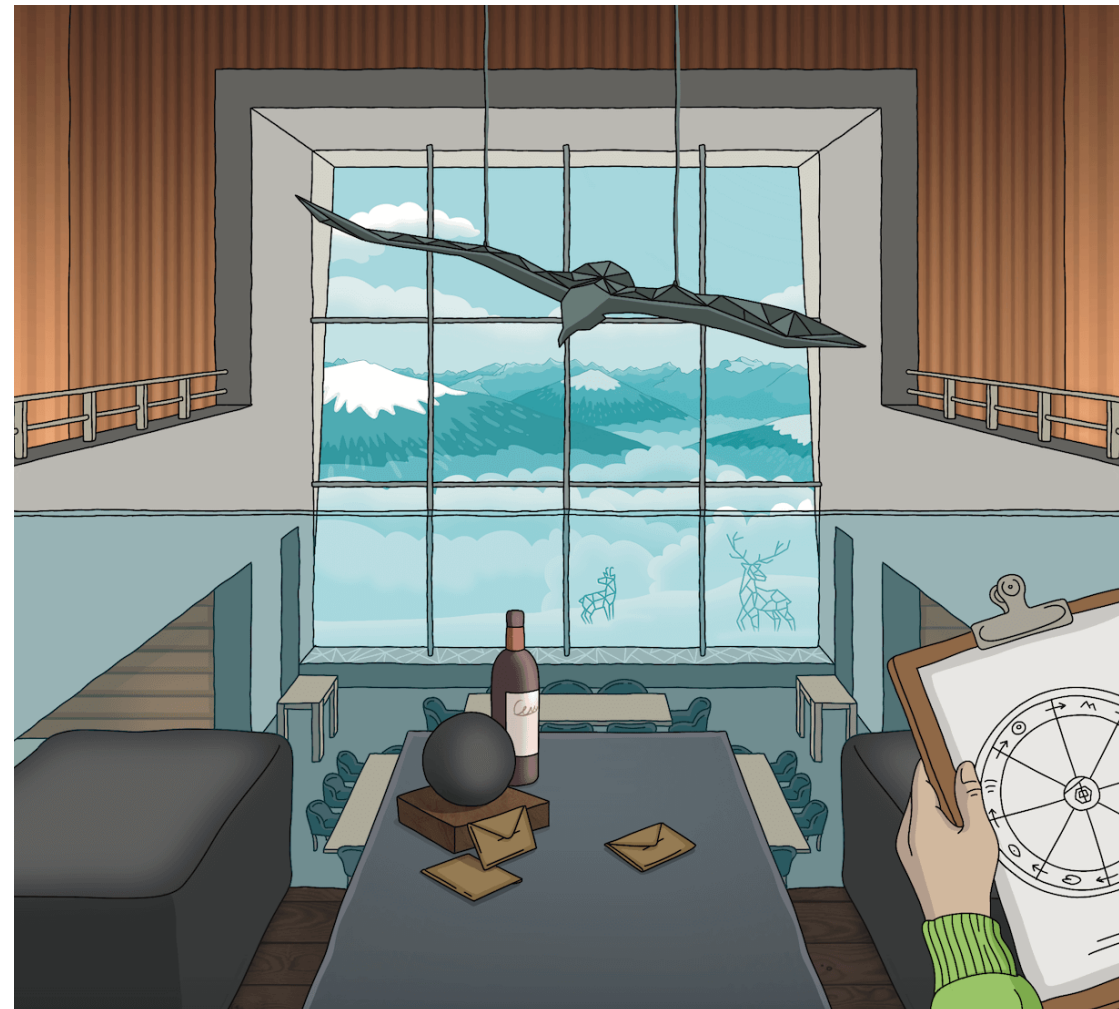


outdoor activities

chetzeron and its unique environment offer a limitless playground, ideal for group activities and teambuildings.

our signature activities are **the barbecue in nature, the barefoot walk and the « peak enigma » puzzle game.**

furthermore, we'd be delighted to tell you all about the many options available from the hotel!



access and transfers



in **summer**, chetzeron is located on the mountain pasture. in **winter**, the hotel is located on the ski slopes of the crans-montana ski area

	in summer	in winter
gondola lift open	by gondola to cry d'er, then on foot to chetzeron. prices depend on the lift company (on site at the ticket office)	by gondola to cry d'er, then on foot to chetzeron. pedestrian pass prices depend on the lift company (on site at the ticket office)
	by gondola to cry d'er, then by 4x4 to chetzeron. prices depend on the lift company (on site at the ticket office)	by gondola to cry d'er, then on skis to chetzeron. ski pass prices depend on the lift company (www.mycma.ch)
gondola lift closed	4x4 from crans-montana to chetzeron. days of arrival and departure: included. additional trips (according to timetable): 15.- per person	by snowcat from crans-montana to chetzeron. days of arrival and departure: included. additional trips (according to timetable): 15.- per person - minimum 4 people





**we'd be delighted to
welcome you at 2112 m!**

thanks to our qualified team, we accompany you
to organize your seminar and ensure its success.

you would like more information or an offer?
we look forward to receiving your request by
e-mail at event@chetzeron.ch



©patrick güller