

a unique architecture to enhance your products



a modern & pure design

spaces with a variety of themes

nobles & warm materials

exceptional luminosity

colours according to the season

a breathtaking landscape

absolute discretion & security

a qualified team

a tailor-made service



lobby & bar

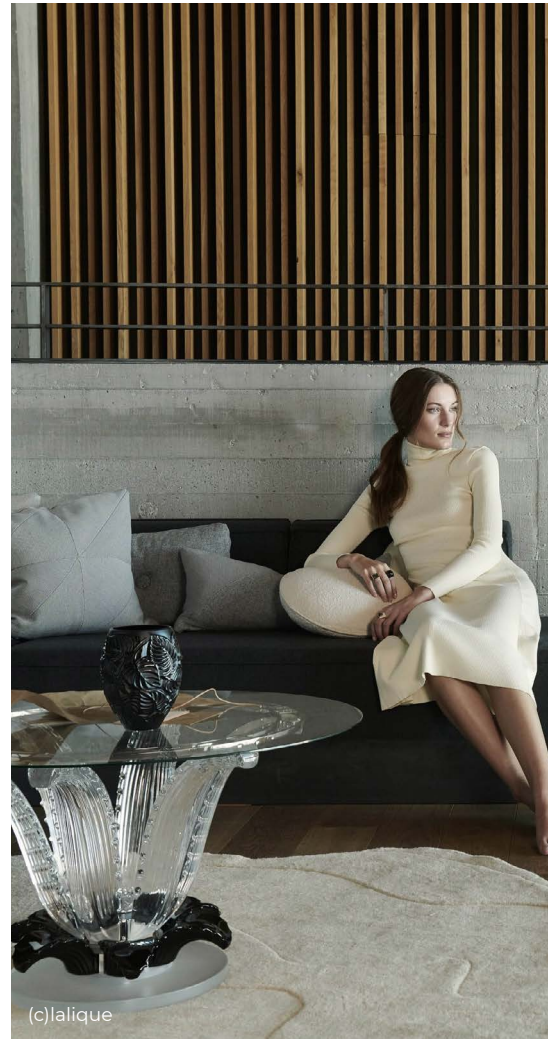
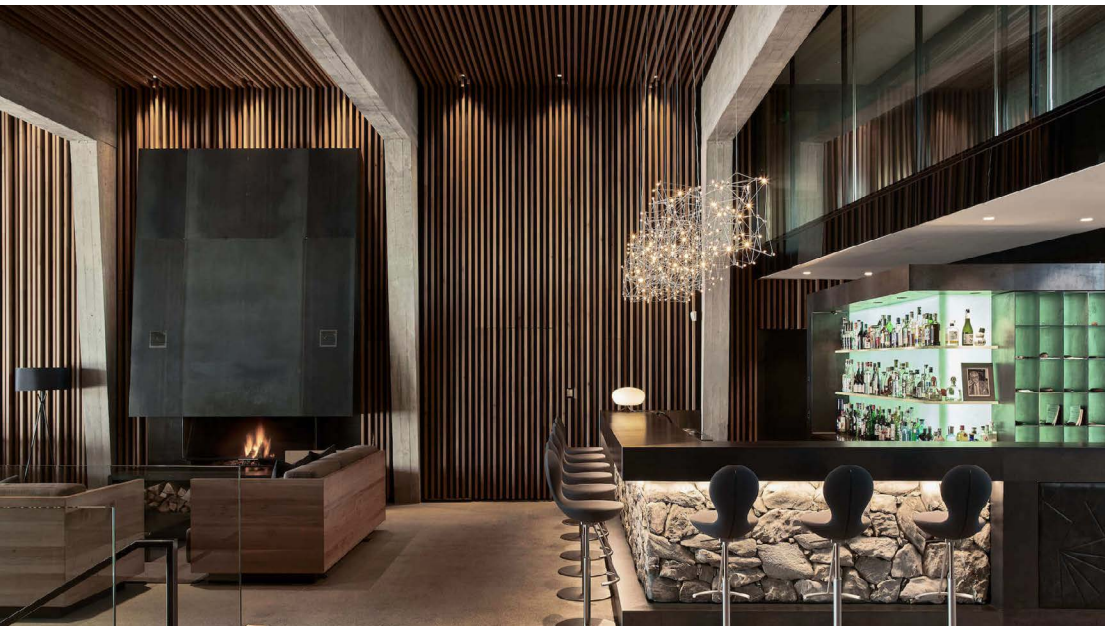
an architecture that is both industrial & warm



(c)laliq

surface : 243 sqm movable furniture : yes sun : south

main materials : oak, concrete, steel



(c)laliq



(c)laliq



hotel dining room

exceptional ceiling height, views and light



(c)slowdown hotels

surface : 89 sqm movable furniture : yes sun : south
main materials : concrete, glass



(c) meyra group



(c)noemi ottilia szabo





panoramic terraces

a view of the highest peaks of the alps and the rhône plain



(c)heschung



(c)ilyafoodstories et laurent-perrier

surface : 180 sqm movable furniture : yes sun : south
main materials : wooden floor, glass barriers, stone wall



(c)lalique



(c)princesse tam tam

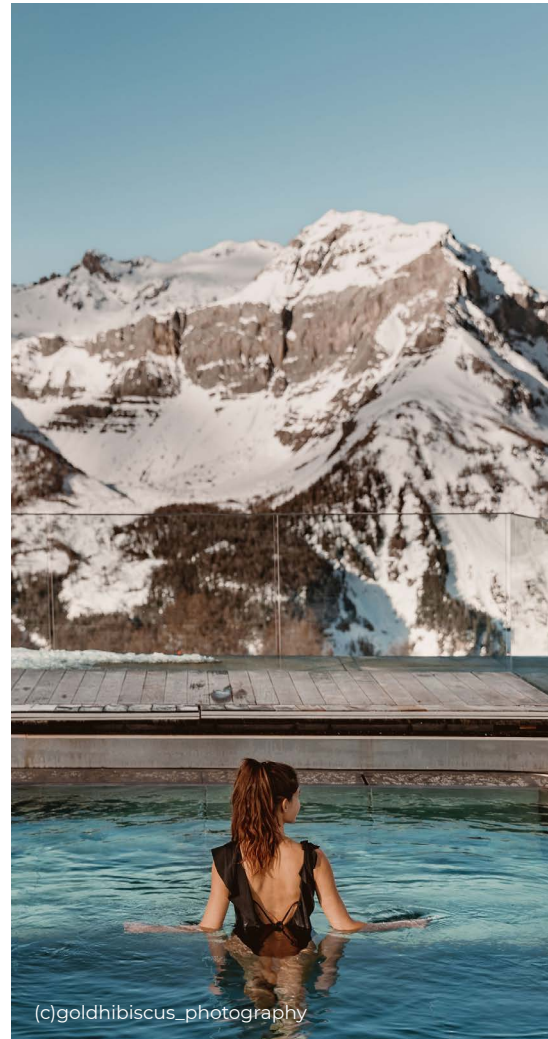


rooftop pool

heated between 33 and 35°C all year round



surface: 206 sqm movable furniture: yes sun: northwest
main materials: wooden floor, glass barriers



(c)wirth.a.trip

(c)goldhibiscus_photography

(c)goldhibiscus_photography



restaurant

the mountain spirit in all its splendour



(c)ilyafoodstories et laurent-perrier



(c)slowdown hotels

surface : 79 sqm movable furniture : yes sun : southwest
main materials : oak, glass



(c)montblanc



lounge

the spirit of the mountain by the fire



surface : 60 sqm movable furniture : yes sun : northwest

main materials : stone, glass, steel





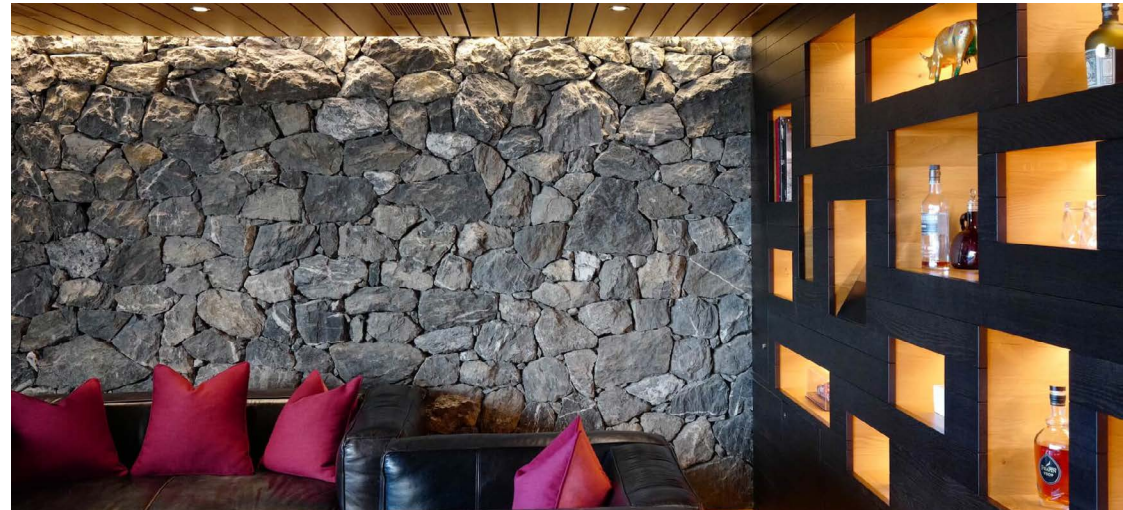
smoking lounge

a cozy and intimate atmosphere



surface: 23 sqm **movable furniture:** yes **sun:** none

main materials: black painted wood, stone, glass





meeting room

or multipurpose room



surface : 54 sqm movable furniture : yes sun : northwest

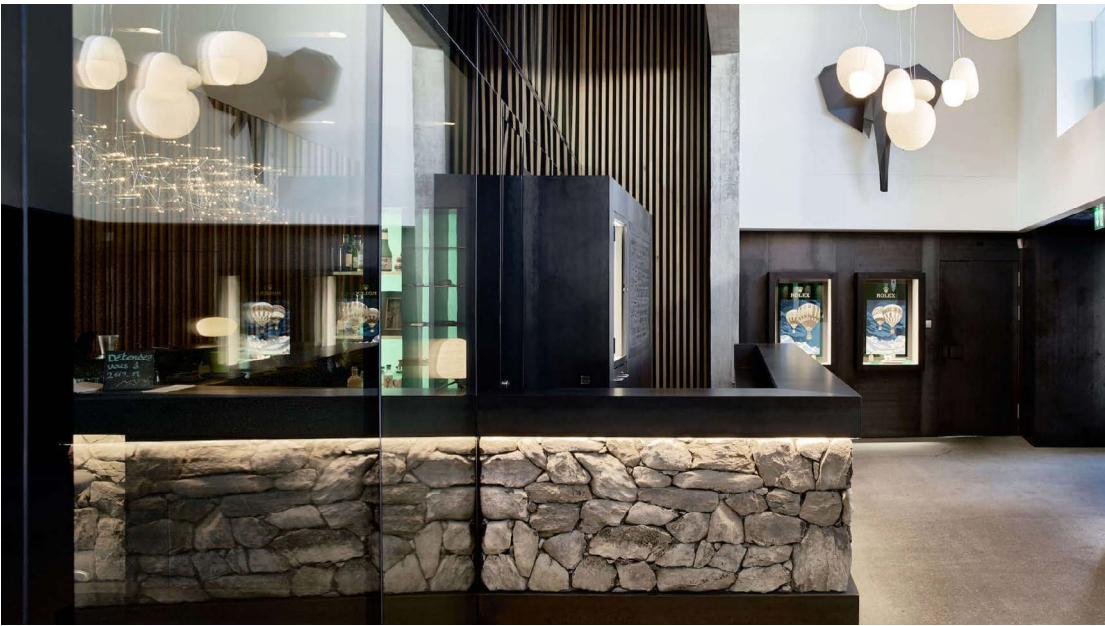
main materials : wood, stone, glass, white walls





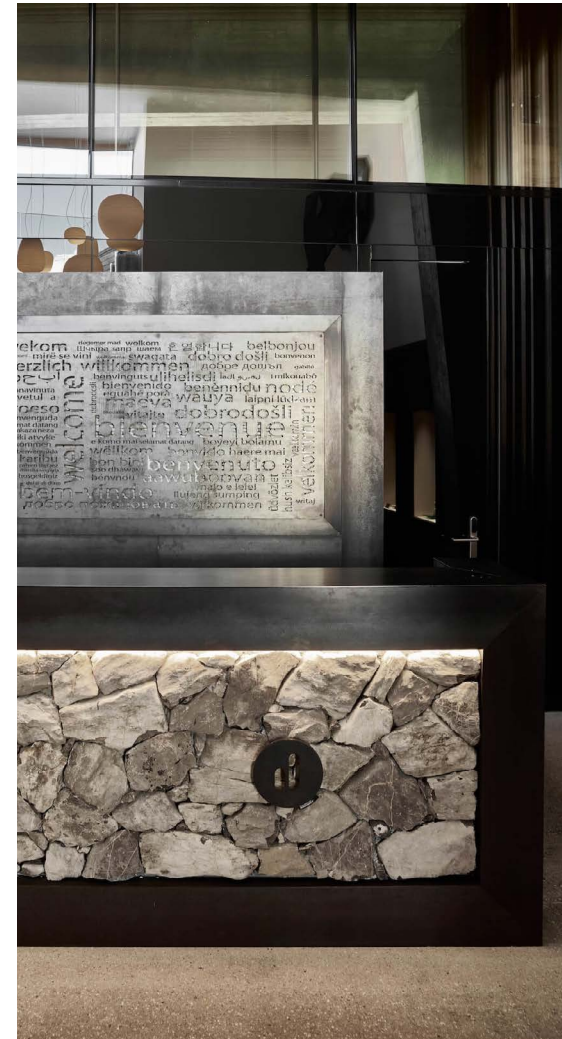
the entrance of the hotel

a characteristic set of stones and windows



surface : 34 sqm movable furniture : no sun : none

main materials : glass, stone, steel





wine cellar

a natural wine cellar dug into the rock



surface : 10 sqm

movable furniture : no

sun : none

main materials : wood, stone





our rooms

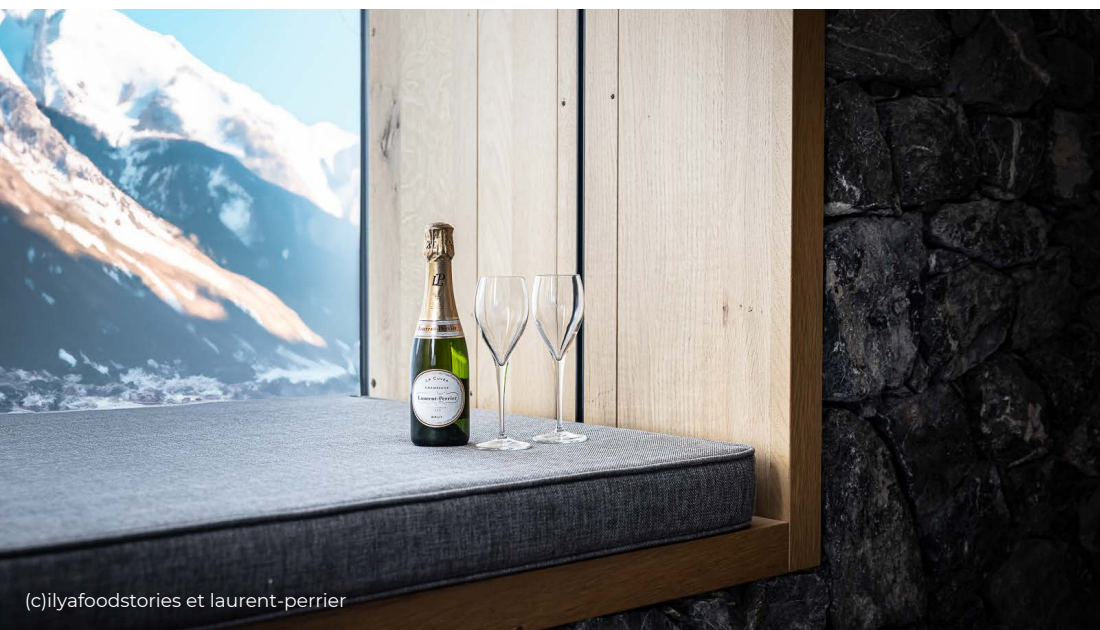
exceptional luminosity and noble materials



(c)heschung

surface : 30 to 50 sqm movable furniture : yes

main materials : oak, stone, glazing sun : south & west



(c)ilyafoodstories et laurent-perrier



(c)lalique



(c)noemi ottilia szabo



16 rooms & 3 junior suites

please note that we have a minimum length of stay and that our rates are valid from monday to thursday.
moreover, we make you aware that other clients may be staying at the hotel during your photo shoot.

non-commissionable rates

maximum capacity:

35 persons in double occupancy

19 persons in single occupancy

	accommodation per person				
	1 night	2 nights	3 nights	4 nights	5 nights
low season (avr, may, oct, nov)	430	730	1 030	1 300	1 500
medium season (jun, jul, sep, dec)	480	800	1 155	1 440	1 680
high season (jan, feb, mar, aug)	550	940	1 320	1 650	1 950

included in the price: room, breakfast and transfers with our vehicles on arrival and departure days. according to our timetable.



(c)princesse tam tam



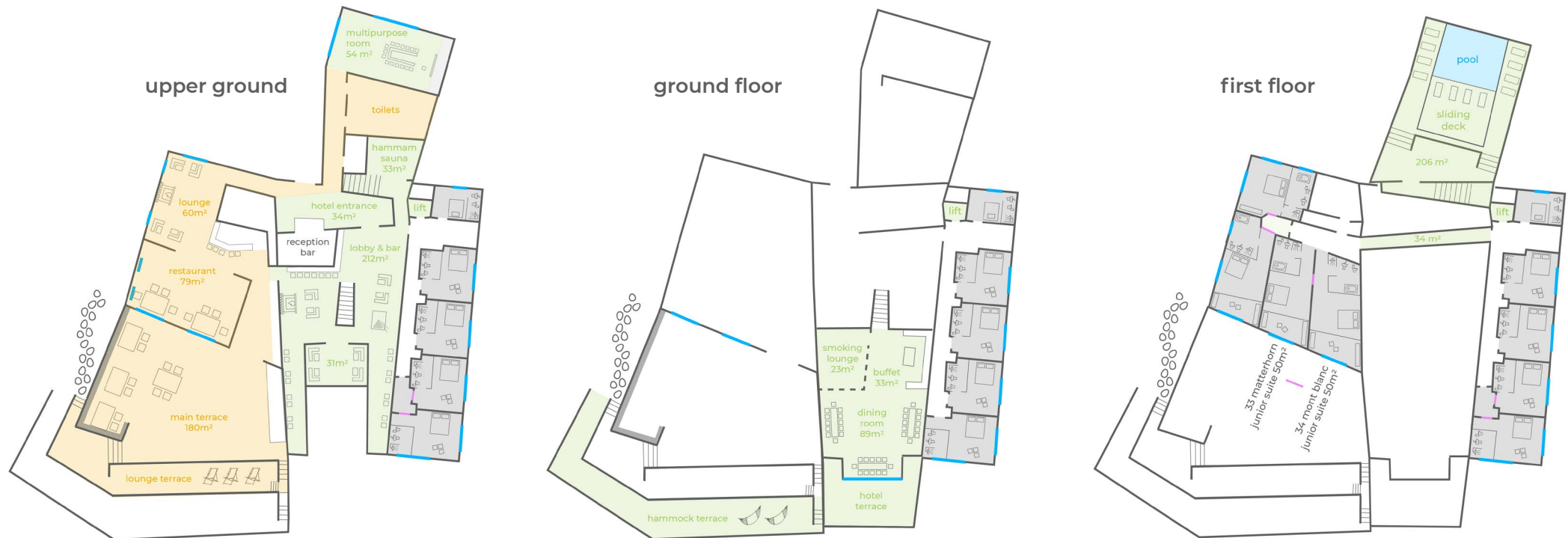
(c)meyra group



pricing of our spaces (from 2 nights)

	includes	from	to	rate per day
rooms	13 rooms and 3 junior suites (3 optional small rooms)	15.00 the day of arrival	11.00 the day of departure	cf. previous page
hotel	lobby & bar, dining room, pool terrace, smoking room, multi-purpose room, wellness area, hotel terrace, hammock terrace	17.00 the day of arrival	11.00 the day of departure	1 000
public	restaurant & lounge, main terrace, lounge terrace	17.00 the day of the shooting	9.00 the day after	1 500
		9.00 the day of the shooting	9.00 the day after	4 000

non-commissionable rates





access and transfers

in summer, chetzeron is located on the mountain pasture. **in winter**, the hotel is located on the ski slopes of the crans-montana ski area. please let us know how much material you need to transport and we reserve the right to charge for additional transfers.

	in summer	in winter
gondola lift open	by gondola to cry d'er, then on foot to chetzeron. prices depend on the lift company (on site at the ticket office)	by gondola to cry d'er, then on foot to chetzeron. pedestrian pass prices depend on the lift company (on site at the ticket office)
	by gondola to cry d'er, then by 4x4 to chetzeron. prices depend on the lift company (on site at the ticket office)	by gondola to cry d'er, then on skis to chetzeron. ski pass prices depend on the lift company (www.mycma.ch)
gondola lift closed	4x4 from crans-montana to chetzeron. days of arrival and departure: included. additional trips (according to timetable): 15.- per person	by snowcat from crans-montana to chetzeron. days of arrival and departure: included. additional trips (according to timetable): 15.- per person - minimum 4 people





we would be delighted to host your photo shoot at 2112m !



from the organization to the realization, we adapt to your wishes so that your shooting takes place in the best possible conditions.

thanks to our qualified team, we accompany you and ensure its success.

for more information or a personalized offer, please contact us at event@chetzeron.ch.